

Gå på logg/file management, står det Backup to A: og du ikke har diskett stasjon må du endre dette, se neste bilde

The screenshot shows the Euronav seaPro software interface. The title bar reads "Euronav seaPro (Route: Brygga-Bærumplastservice, Log: Hovda)". The menu bar includes "Chart", "Waypoints", "Route", "Log", "Tides", "Setup", "RADAR", "Weather", "Sailing", "Window", and "Help". The "Log" menu is open, showing options like "Select...", "New...", "Save As...", "Reset", "View...", "View Format...", "Select Previous Track...", "Display Vessel Track On Charts", "Display Previous Track On Charts", "View graphs - Historic (Logged data) ...", "View graphs - Running (Instrument data)...", "Animation...", "Add", "Print...", "Export...", "Import...", and "File Management". The "File Management" sub-menu is open, showing "Backup to A:...", "Load from A:...", and "Delete File...". The main window displays a nautical chart of the North Atlantic/Mediterranean Sea area, with a scale of 1:20000 and a distance of 71 nm. The chart shows various geographical features and a vessel track. The right-hand side of the interface contains a "Panel" with "Navigator" and "Plan" sections. The "Navigator" section shows fields for LAT, LNG, COG, SOG, ROT, and Hd T. The "Plan" section shows fields for Wpt, Dist, BrT, CTS, and ETA. The "Actual" section shows fields for Wpt, Dist, BrT, XT, TTG, ETA, and ETR. The "Target Marker" section shows a field for Dist. The Windows taskbar at the bottom shows the Start button and several open applications: "X-Klubb - Microsoft ...", "ny utgave - Windo...", "innstillinger", "2 Microsoft Power...", and "Euronav seaPro (R...". The system tray shows the time as 19:16.

Euronav seaPro (Route: Brygga-Bærumplastservice, Log: Hovda)

Chart Waypoints Route Log Tides Setup RADAR Weather Sailing Window Help

59 13.373N 10 12.8

View X-Line

BA4004 | 1:20000

71 nm | NORTH ATLANTIC:MEDITERRANEAN SEA

Panel

Navigator

LAT

LNG

COG

SOG

ROT

Hd T D m

Plan

Wpt 1

Dist 0.14

BrT 232 CTS 230

ETA 09 May 17:00

Actual

Wpt 1

Dist

BrT

XT

TTG

ETA

ETR

Target Marker

Dist nm

Start

X-Klubb - Microsoft ... ny utgave - Windo... innstillinger 2 Microsoft Power... Euronav seaPro (R... NO 19:16

Gå til setup/ system properties. Endre A: til C: Restart Seapro

**Euronav seaPro (Route: Brygga-Bærumplastservice, Log: Hovda)**

Chart Waypoints Route Log Tides Setup RADAR Weather Sailing Window Help

59 13.532N 10 5.845E UTC 17:19:37 (19:19)

View X-Line Route SatCom Enroute Panel

BA4004 | 1:20000000 | Metres | x101.3 | datum WGS84 | 71 nm | NORTH ATLANTIC:MEDITERRANEAN SEA

**System Properties**

Paths  
Path to floppy drive or folder used for file backups:  
A:  
Path to route files:  
Route

Time  
 Synchronise PC clock to NMEA UTC time

Sailing  
 Allow Sailing Features  
Wind Angles  
 0 - 180  
 0 - 360

Speech  
 Allow Speech Features

System Tick (default 50) in ms  
 10  50  100  200  
Alters the update rate to the display, lower values require higher performance computer

Cancel OK

**Navigator**

LAT  
LNG  
COG  
SOG  
ROT  
Hd T D m

**Plan**

Wpt 1  
Dist 0.14  
BrT 232 CTS 230  
ETA 09 May 17:00

**Actual**

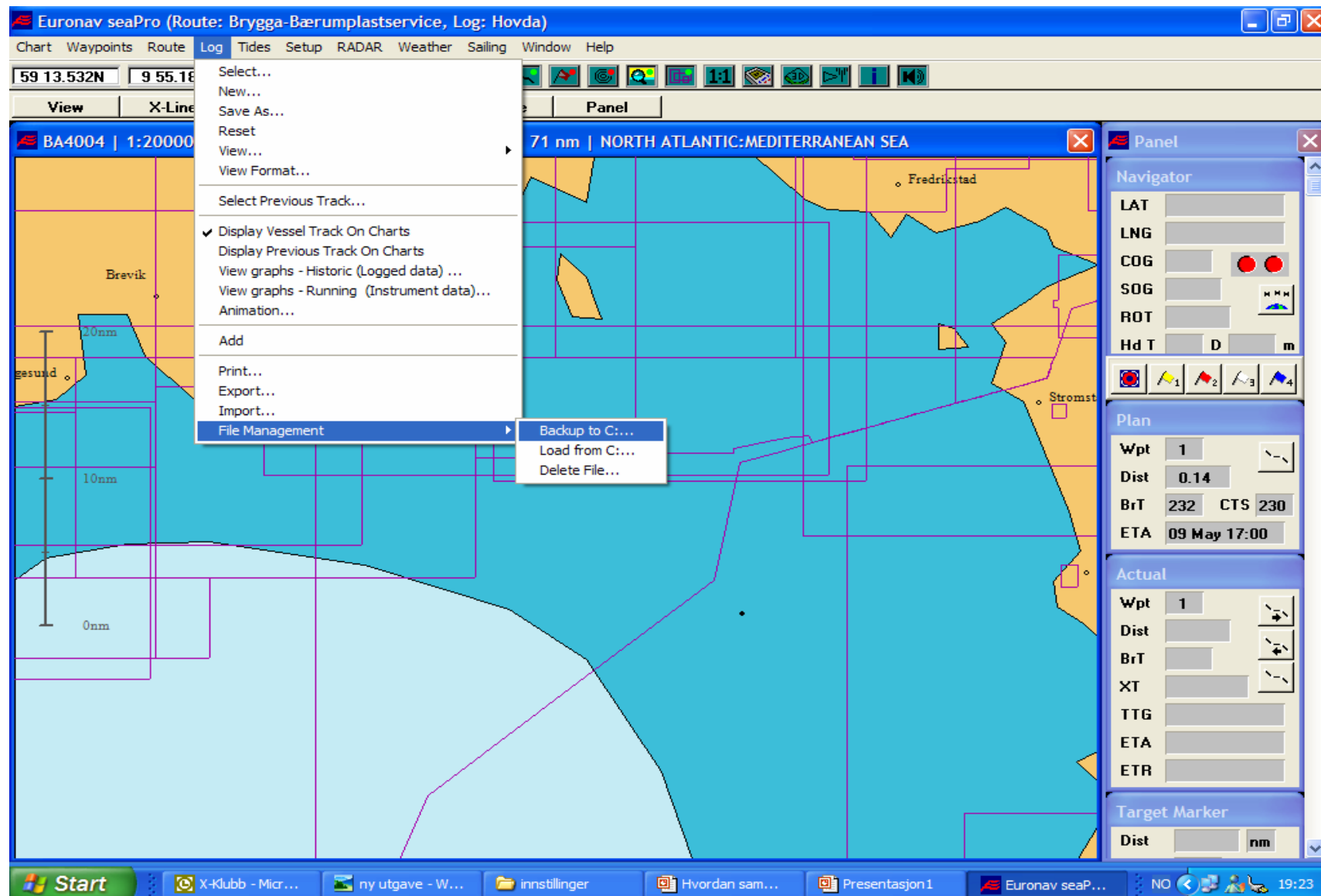
Wpt 1  
Dist  
BrT  
XT  
TTG  
ETA  
ETR

**Target Marker**

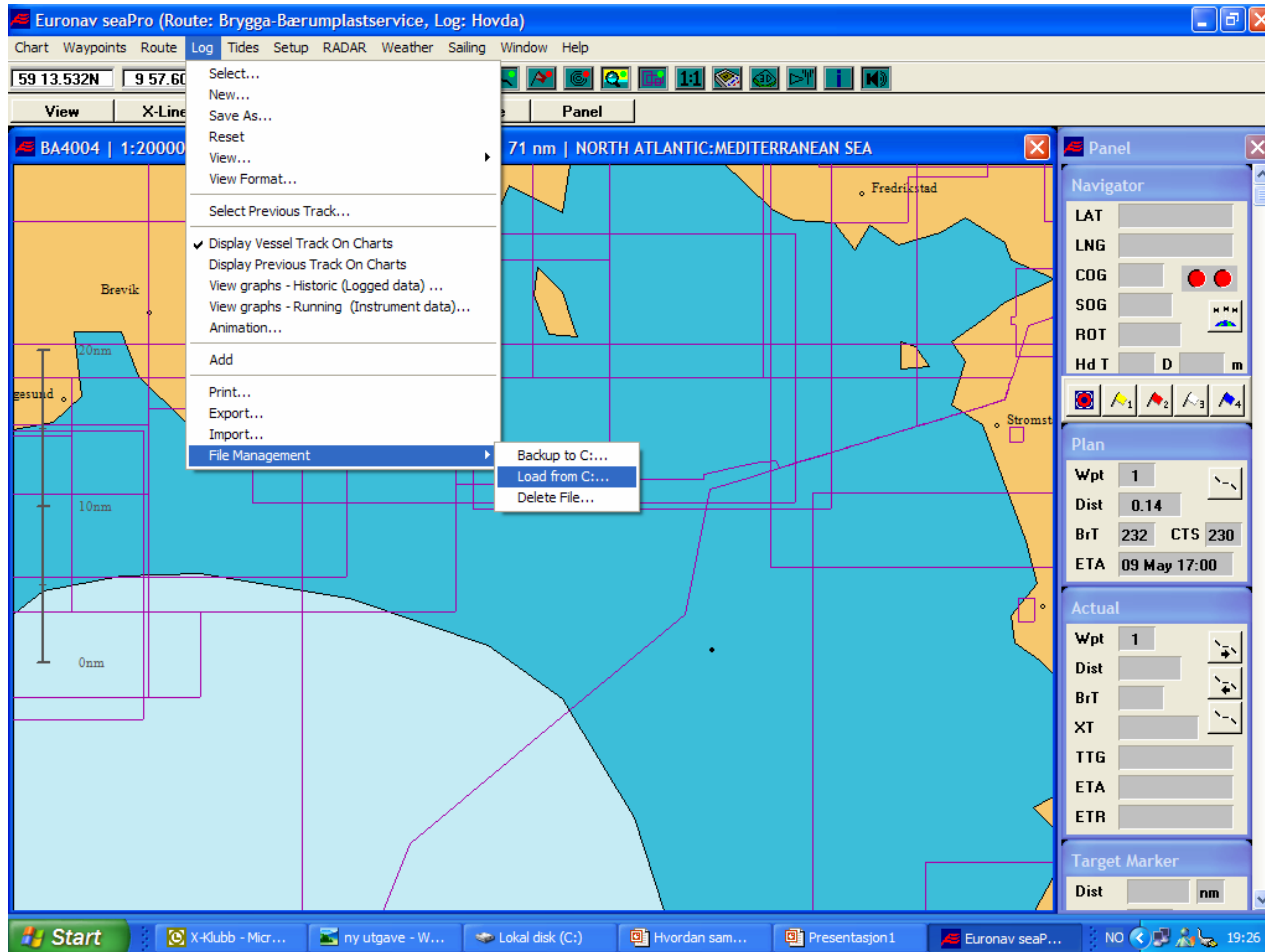
Dist nm

Start X-Kubb - Microsoft ... ny utgave - Windo... innstillinger 2 Microsoft Power... Euronav seaPro (R... NO 19:19

Velg logg/file management/backup to C: Rute mappa åpner seg og du velger den ruten du skal eksportere, trykk ok. Du vil så finne 4 filer som ligger rett under C disken din.



Skal du importere en loggfil fra en annen båt, legg filen rett under disken C. Velg logg/file management/load from C



C disken vil da åpne seg og du vil kunne velge den loggfilen som du på forhånd har lagt der, velg og trykk ok.

Du får da spørsmål om du vil bruke denne filen

