

Gå på logg/file management, Backup

The screenshot displays the seaPro Plus software interface. The title bar shows the vessel name "seaPro Plus Cells (6) N05H0820" and various settings like scale (1:8000), datum (WGS84), and speed (10 nm). The main window is a nautical chart with a menu open over it. The menu options are:

- New
- Select
- Save As
- Reset
- Display Vessel Track On Charts
- Display Previous Track On Charts
- Add
- Inquire Log
- View Format
- View - Data Log
- View - Position Track
- View graphs - Running (Instrument data)
- View graphs - Historic (Logged data)
- Animation
- Settings...
- File Management
 - Backup
 - Restore
 - Delete
 - Import
 - Export
 - Print

The chart shows a coastal area with depth contours, soundings, and various navigational markers. The right-hand side of the interface contains several panels:

- Navigator:** Fields for Lat, Lng, COG, SOG (30), ROT, Hd T, and UTC (19:29:39 [20:29]).
- Log Marker:** A panel with a "Log Marker" icon and a radio button for "On track" (selected) and "Off track".
- Actual:** Fields for WPT, Dist, BrT, XTE, TTG, ETA, DTR (nm), and ETR.
- Target Marker:** Fields for Dist (nm) and BrgT, with "Place" and "Setup" buttons.

At the bottom right, there are radio buttons for "Chart" (selected) and "Manual".

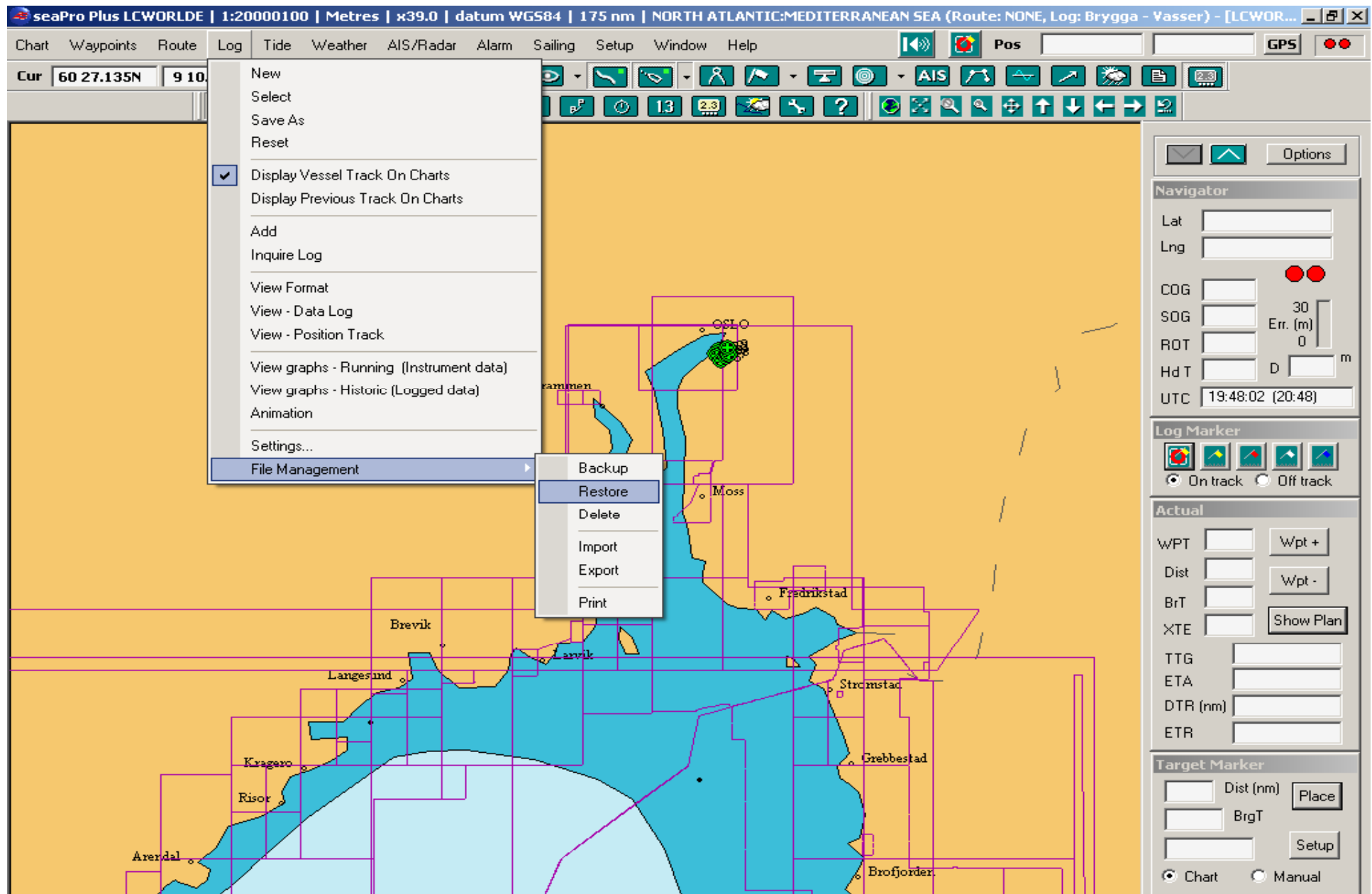
Hvis du vil velge en spesifikk rute trykk på knappen "select Individual Files"
Vil du endre hvor tekstfilen skal lagres trykk på " Change Path"
Trykk så på "Backup" knappen

The screenshot displays the seaPro Plus software interface. The main window shows a nautical chart with a route plotted. A "File Management" dialog box is open in the center, with three buttons circled in red and numbered 1, 2, and 3. The dialog box contains the following elements:

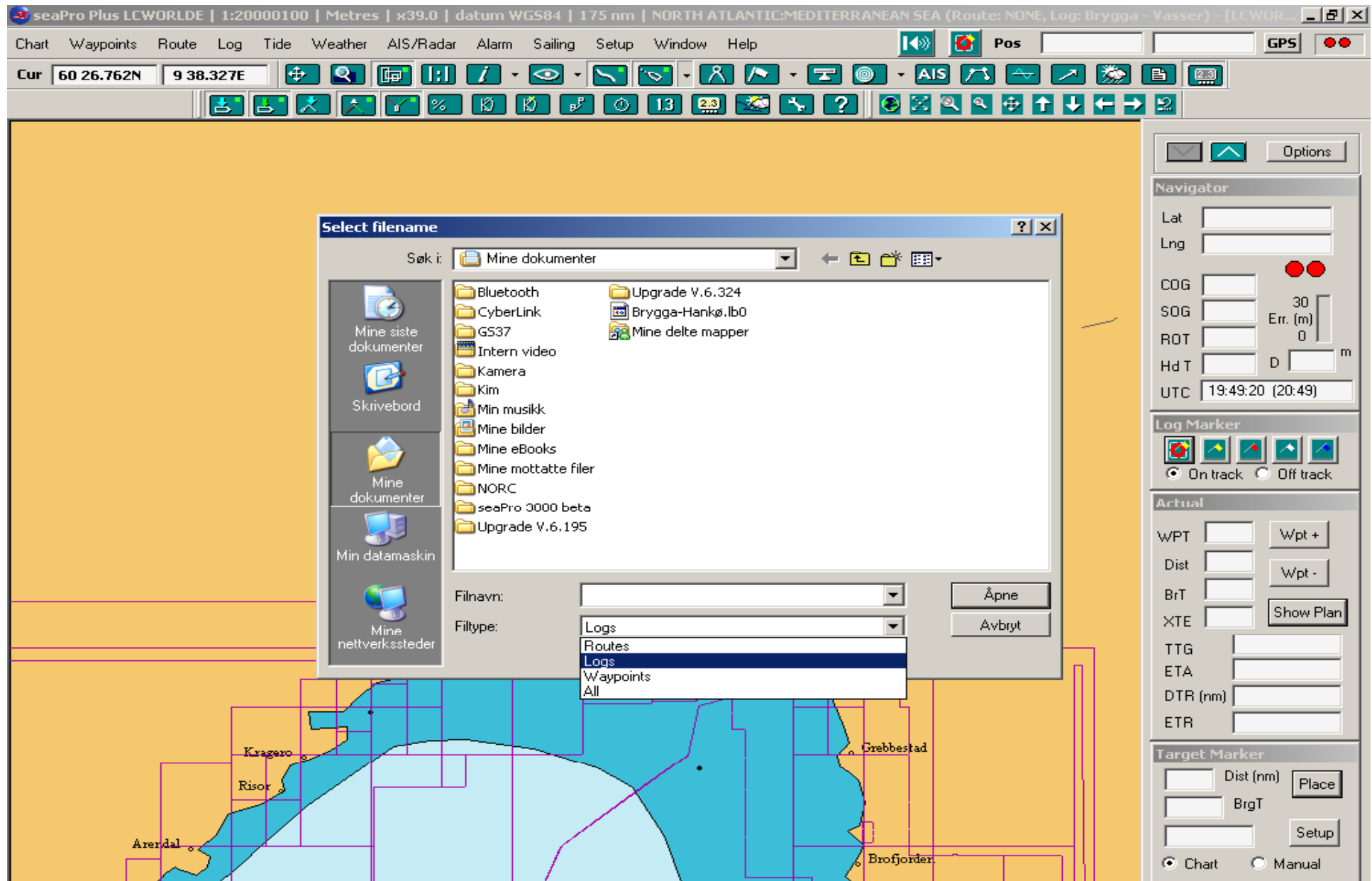
- Files to Backup:** Three checkboxes for "All Logs", "All Routes", and "All Waypoints Files". Below them is a "Select Individual Files" button (labeled 1) and a text field showing "0 items".
- Backup Destination:** A section titled "Current Path" with a text field containing "C:\Documents and Settings\Administrator\M". Below it is a "Change Path" button (labeled 2).
- Buttons:** At the bottom of the dialog are "Backup" (labeled 3) and "Close" buttons.

The background interface includes a menu bar (Chart, Waypoints, Route, Log, Tide, Weather, AIS/Radar, Alarm, Sailing, Setup, Window, Help), a toolbar with various navigation and tool icons, and a right-hand sidebar with sections for "Navigator" (Lat, Lng, COG, SOG, ROT, Hd T, UTC), "Log Marker" (On track/Off track), "Actual" (WPT, Dist, BrT, XTE, TTG, ETA, DTR, ETR), and "Target Marker" (Dist, BrgT, Place, Setup).

Skal du importere en loggfil fra en annen båt, legg filen rett under disken C. Velg logg/file management/Restore



C disken vil da åpne seg og du vil kunne velge den loggfilen som du på forhånd har lagt der, velg om det er en loggfil/routes eller All



Har du en tekst fil du skal importere, velg Import

