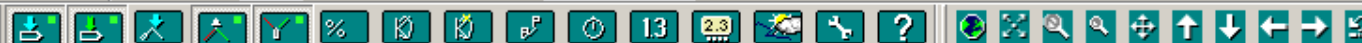


Cur 60 26.949N 10 27.505E



Nav Properties

Navigator | Track | Log | Display | NMEA Rx | NMEA Tx | RADAR | Asset tracking

Track Recording

- On
- Use memory
- Interval: Hrs. 0 Mins. 1 Secs. 0
- Distance 0.05 nm
- Track Width 0.00 nm

Extended Track Lines

- Enable
- COG
- Allow < 1 Kt
- Gyro
- Parallel Indices:
 - COG
 - Gyro
 - Width 0.50 nm
- Time for track line (in minutes): 3 6 12 30 60 Fixed
- Time for predicted path (in minutes): Off 0.5 1 2 3 6
- Use red line

OK Avbryt Hjelp

Options

Navigator

Lat
Lng
COG
SOG 30
ROT Err. (m) 0
Hd T D m
UTC 19:56:33 (20:56)

Log Marker

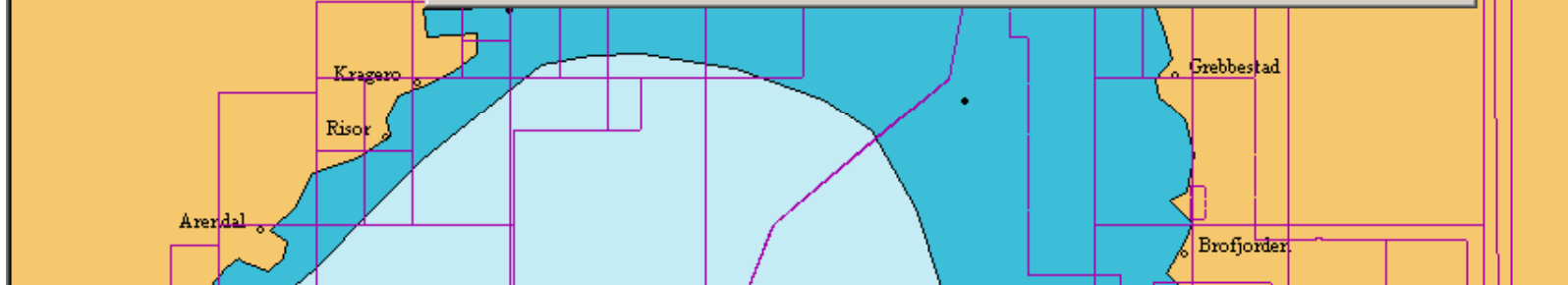
On track Off track

Actual

WPT Wpt +
Dist Wpt -
BrT
XTE Show Plan
TTG
ETA
DTR (nm)
ETR

Target Marker

Dist (nm) Place
 BrgT
 Setup
 Chart Manual



Cur **60 26.949N** **10 27.505E** Icons for navigation and display

Nav Properties

Navigator | Track | Log | Display | NMEA Rx | NMEA Tx | RADAR | Asset tracking

Log Recording

- On
- Act as DDE Server
- Log File Daily Name Change: Off, At midnight UTC time, At midnight local time
- Log File Type: Additional ASCII text file

Position 0 Hrs. 1 Mins. 0 Secs.

Pos/COG/SOG 0 Hrs. 10 Mins. 0 Secs.

Pos/Water Temp 0 Hrs. 10 Mins. 0 Secs.

Pos/Wind(T) 0 Hrs. 10 Mins. 0 Secs.

Pos/Log Speed/Hdg M/Hdg T 0 Hrs. 10 Mins. 0 Secs.

Pos/Depth 0 Hrs. 10 Mins. 0 Secs. Add To Overlay

Pos/COG/SOG/ROT/Speed/Hdg M - T/Log/Depth/Wind 0 Hrs. 0 Mins. 10 Secs. Records most commonly used data

OK Avbryt Hjelp

Options

Navigator

Lat
Lng
COG 30
SOG Err. (m) 0
ROT
Hd T D m
UTC

Log Marker

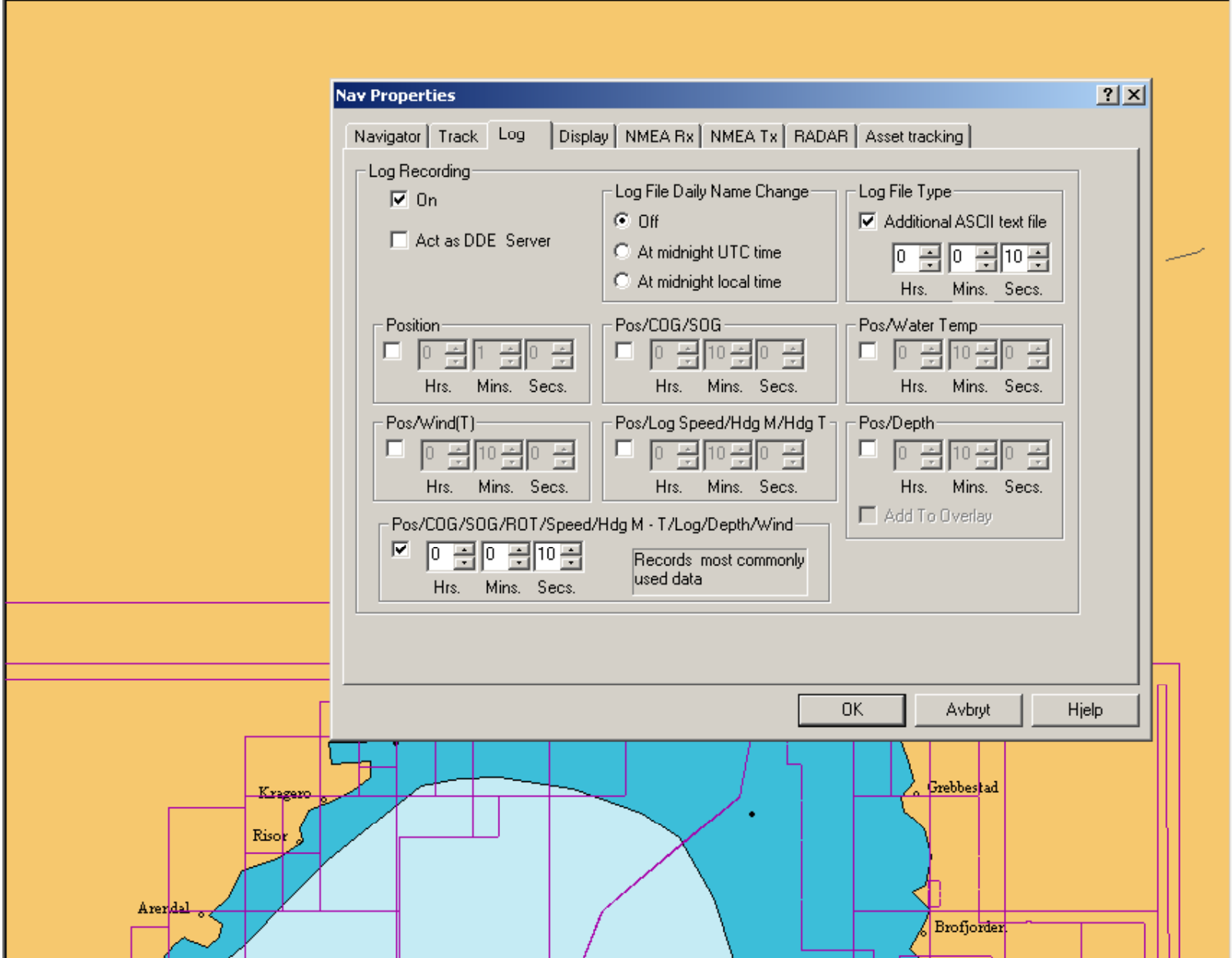
On track Off track

Actual

WPT Wpt +
Dist Wpt -
BrT
XTE Show Plan
TTG
ETA
DTR (nm)
ETR

Target Marker

Dist (nm) Place
 BrgT
 Setup
 Chart Manual



Nav Properties

Navigator | Track | Log | Display | NMEA Rx | NMEA Tx | RADAR | Asset tracking

Transmit NMEA Sentences

Position/Speed

- GGA (Pos/Status)
- GLL (Pos)
- GCA (I.C.S.)
- VTG (COG/SOG)
- HDT (Heading T)
- ROT - Rate of Turn

Autopilot

- APA (Autopilot)
- APB (Autopilot)
- BWR (Bearing/Distance)
- BWC (Bearing/Distance GC)
- XTE (Cross Track Error)
- PRAPA (Special APA)

1 ... Tx Interval (s) ... 10

Other

- RMB / RMC
- WPL (Route waypoint)
- HSC (Heading)

Special Sentences

- SILVA
- B&G
- NKE
- tacktick
- Send via Marker Tx Port

Precision for position sentences

Number of dp's

Other

- VDR (Tidal Set/Drift)
- MWD - Geographic wind

Echo Rx To Tx

- Specials (\$Pxxx)

OK Avbryt Hjelp

Options

Navigator

Lat

Lng

COG

SOG Err. (m)

ROT

Hd T D m

UTC

Log Marker

On track Off track

Actual

WPT Wpt +

Dist Wpt -

BrT

XTE Show Plan

TTG

ETA

DTR (nm)

ETR

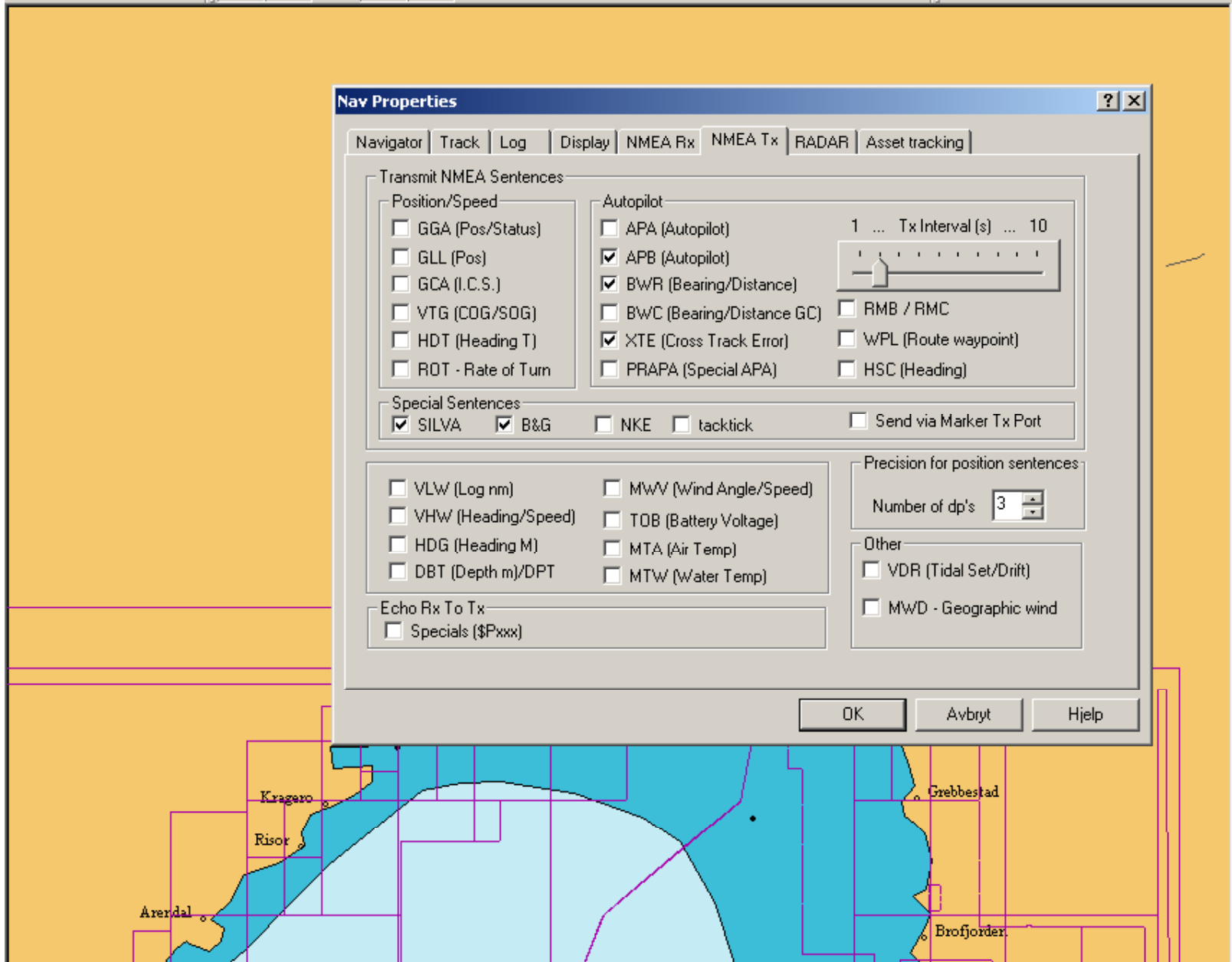
Target Marker

Dist (nm) Place

BrgT

Setup

Chart Manual



Nav Properties

Navigator | Track | Log | Display | NMEA Rx | NMEA Tx | RADAR | Asset tracking

Show on screen
 Transmit data
 Enable tracking

Monitor asset types

MOB/Life jackets Show track Alarm
 Aux vessels - water bikes/tenders
 Vessels

Clear Display

OK Avbryt Hjelp

Options

Navigator

Lat
Lng
COG 30
SOG Err. (m)
ROT 0
Hd T D m
UTC 21:07:52 (22:07)

Log Marker

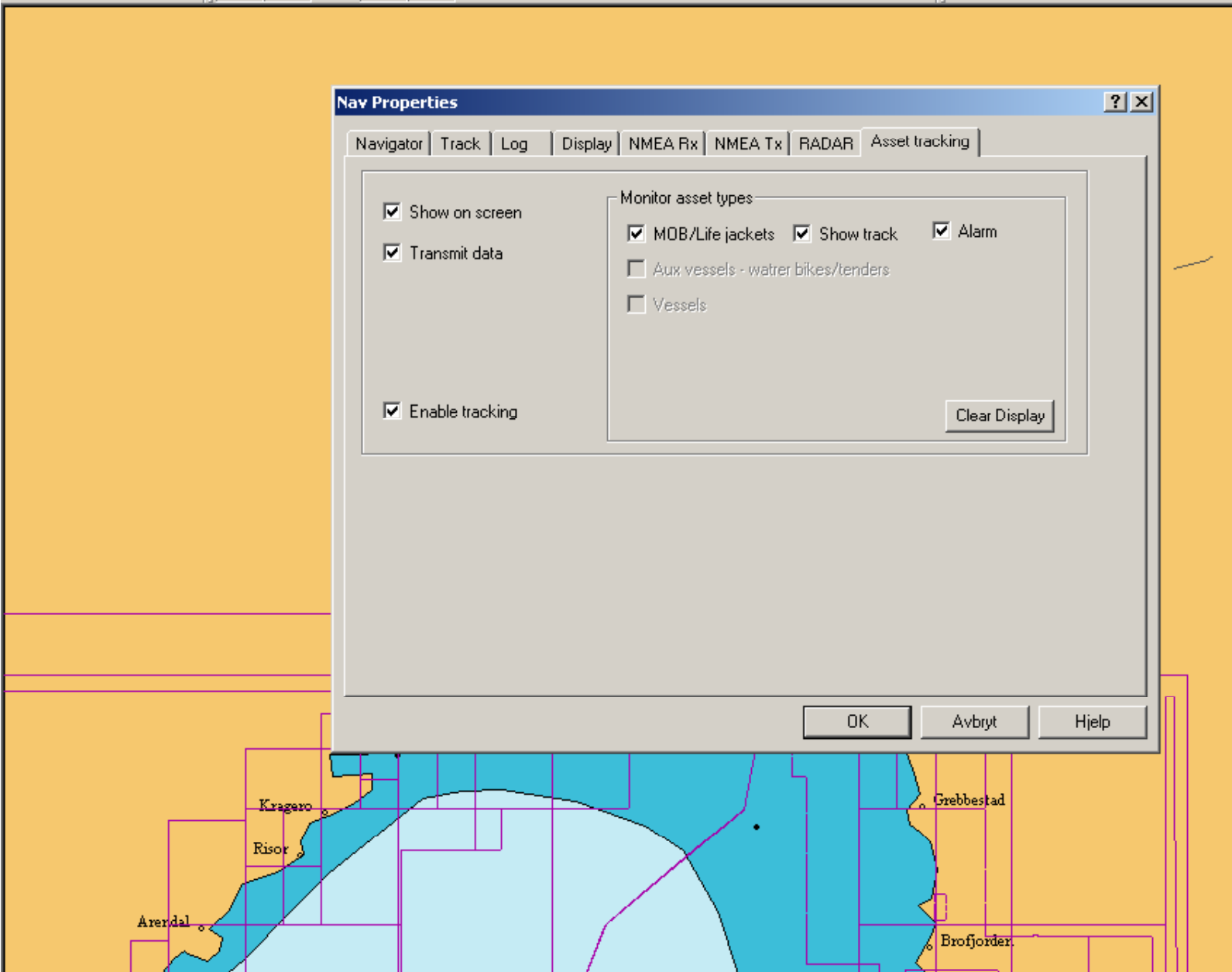
On track Off track

Actual

WPT Wpt +
Dist Wpt -
BrT
XTE Show Plan
TTG
ETA
DTR (nm)
ETR

Target Marker

Dist (nm) Place
 BrgT
 Setup
 Chart Manual



Options

Navigator

Lat
Long

COG
SOG 30
Err. (m)
ROT 0
Hd T D m
UTC 21:08:39 (22:08)

Log Marker

On track Off track

Actual

VPT Wpt +
Dist Wpt -
BrT
XTE Show Plan

TTG
ETA
DTR (nm)
ETR

Target Marker

Dist (nm) Place
 BrgT
 Setup
 Chart Manual

Chart Settings

Cartography 1 | Cartography 2 | Chart Datums | Chart Modes | Chart Directories | S57 A | S57 B | Overlays | Databases

Chart Type Preference

Vector

Raster

Ignore ARCS overview 4000

Outline Charts

None Always

Auto (recommended)

Check program has closed

Enable Delay (s)

Allow up/down movement in Chart Zoom box

Drawing styles (chart dependent)

No depth contour shading

Draw using object styles

Draw text using high-light

Antialiased quality text

Enhance raster chart image

Enable - default

Larger numeric font size

Maptech BSB4/PCX Chart memory cache

No cache Cache Max cache - default

Re-enable Warnings

Position display format

Number of dp's

Measure Bar - display units

nm Meters

Cursor Shape

Standard Large

Animated

OK Avbryt Bruk Hjelp

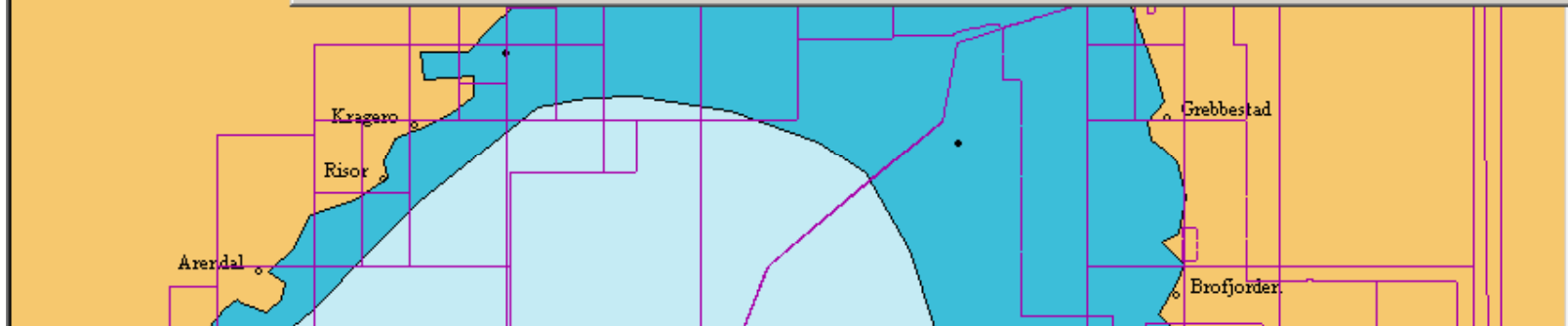


Chart Settings

Cartography 1 | Cartography 2 | Chart Datums | Chart Modes | Chart Directories | **S57 A** | S57 B | Overlays | Databases

Depth Area / Contours

- 10.0 Safety Contour (m)
- 5.0 Shallow Contour (m)
- 50.0 Deep Contour (m)
- 10.0 Safety Depth (m)

Two Shades Shallow Pattern

Auto scale detail

Show Overscale at zoom x

ENC - features only

S52 Best object (slower draw)

S52 Cursor

Symbology

Enable	Viewing Group
<input checked="" type="checkbox"/>	Information
<input checked="" type="checkbox"/>	Natural & Man Made
<input checked="" type="checkbox"/>	Depths & Currents
<input checked="" type="checkbox"/>	Soundings
<input checked="" type="checkbox"/>	Obstructions & pipelines
<input checked="" type="checkbox"/>	Traffic Routes
<input checked="" type="checkbox"/>	Special Areas
<input checked="" type="checkbox"/>	Navigational Aids
<input checked="" type="checkbox"/>	Lights
<input checked="" type="checkbox"/>	Radar
<input checked="" type="checkbox"/>	Services & Small Craft

Symbols

- Simple
- Traditional
- Traditional + Color

Flag / Show

- Symbolized Boundaries
- Quality of data
- Missing Attribute Data
- Poor Position Data

OK Avbryt Bruk Hjelp

Options

Navigator

Lat
Long

COG 30
SOG Err. (m) 0
ROT
Hd T D m
UTC 21:11:28 (22:11)

Log Marker

On track Off track

Actual

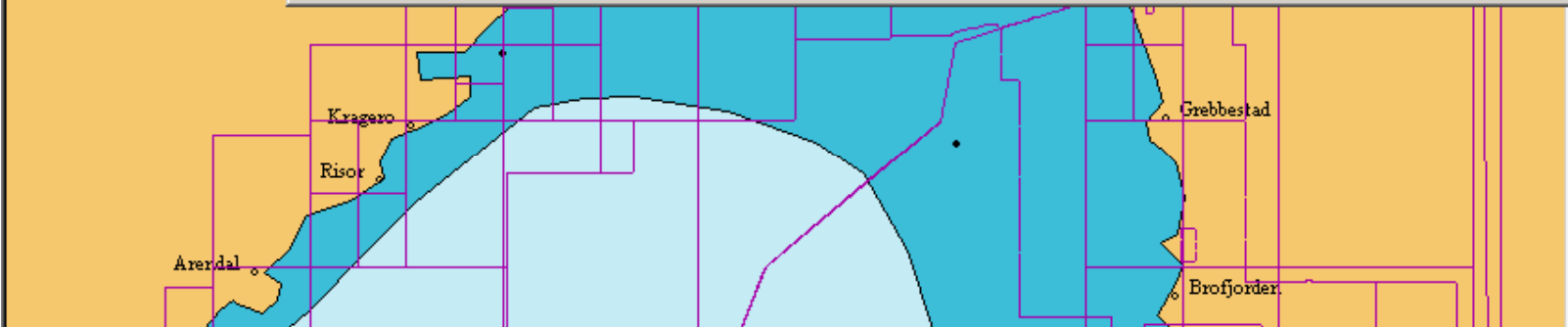
VPT Wpt +
Dist Wpt -
BrT
XTE Show Plan

TTG
ETA
DTR (nm)
ETR

Target Marker

Dist (nm) Place
 BrgT
 Setup

Chart Manual



Cur 60 27.694N 10 28.926E

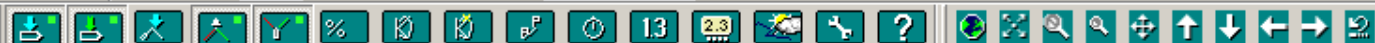


Chart Settings

Cartography 1 | Cartography 2 | Chart Datums | Chart Modes | Chart Directories | S57 A | S57 B | **Overlays** | Databases

Overlays to load at start up

Overlay 1 - (editable)
Show Overlays\Overlay.gxf Browse...

Overlay 2
Show Browse...

Note: Changes only take place on restarting the application.

OK Avbryt Bruk Hjelp

Options

Navigator

Lat
Long
COG
SOG 30
ROT Err. (m)
Hd T D m
UTC 21:12:30 (22:12)

Log Marker

On track Off track

Actual

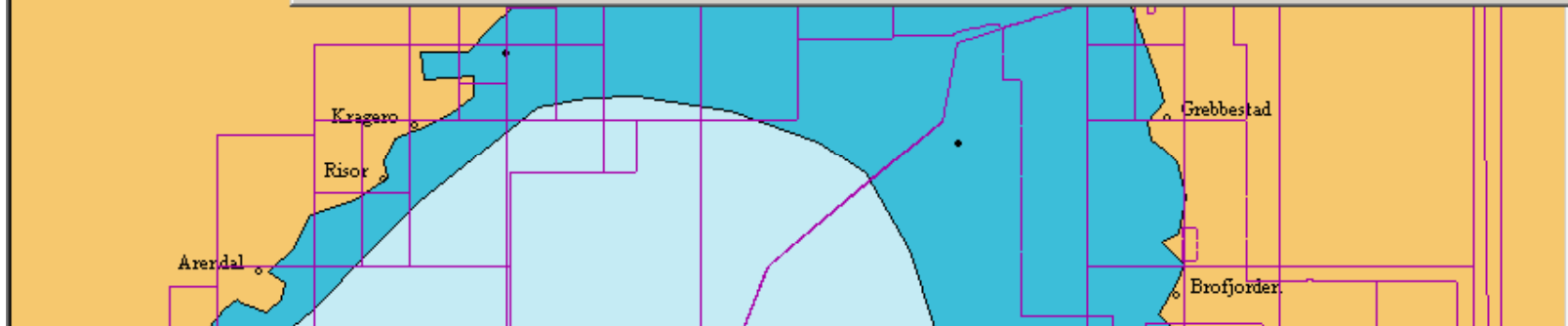
VPT Wpt +
Dist Wpt -
BrT
XTE Show Plan

TTG
ETA
DTR (nm)
ETR

Target Marker

Dist (nm) Place
 BrgT
 Setup

Chart Manual



Cur 60 26.949N 10 21.820E

Serial Settings

Channels A B C D E F G H

Com Port: 1 3 4 11 15 16 17 18 AUTO-SCAN

Label

Note: This does not effect your configurations - Used for identifying COM ports only

NMEA Rx

NMEA Tx None

Marker Tx None

AIS None

NAVTEX None

Note: Navtex can not share a port with any other input.

Baud Rate

Power Cable

Secondary Position Fix None

COM	Description	Status	USB

Note: Some ports may be virtual ports (bluetooth/PDA) and not be available for NMEA 0183 input

Controls Use Checksums Disable all ports

OK Cancel Show/Refresh

Options

Navigator

Lat

Lng

COG ●●

SOG 30 Err. (m) 0

ROT

Hd T D m

UTC

Log Marker

On track Off track

Actual

WPT Wpt +

Dist Wpt -

BrT

XTE Show Plan

TTG

ETA

DTR (nm)

ETR

Target Marker

Dist (nm) Place

BrgT Setup

Chart Manual

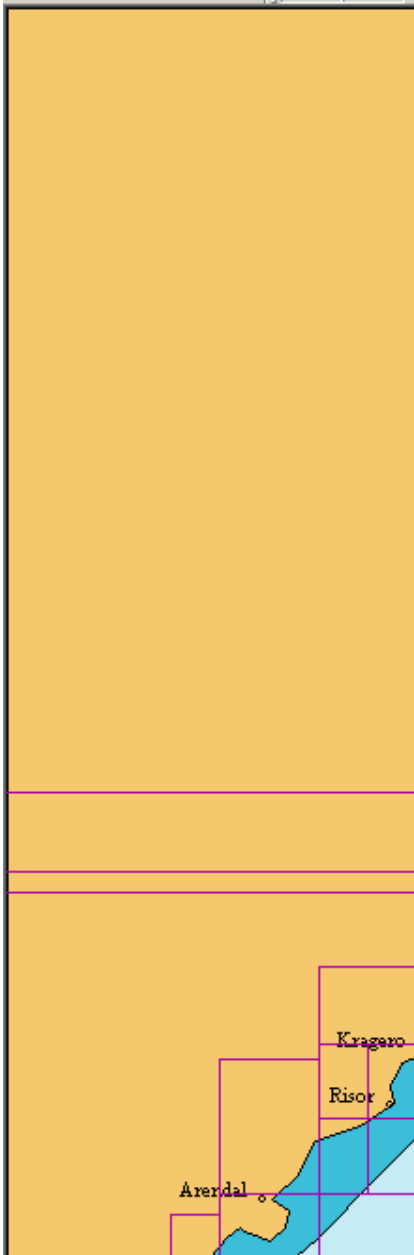


Chart Waypoints Route Log Tide Weather AIS/Radar Alarm Sailing Setup Window Help

Cur 60 27.508N 10 53.942E

GPS ●●

Vessel Information

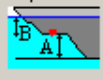
Vessel | Vessel Engine Data

Vessel profile
 3D\Vessel\trawlerYacht13m.ves Browse...

Name Xtreme Speed 7.0 (knots) Save

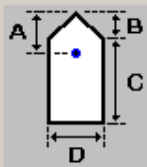
Draught 2.0 (m) Weight 7000.0 (kg)

Depth transducer

 Transducer to keel A 0.0 (m)

Transducer to water line B 0.0 (m) Extension arms

Vessel Shape



A Antenna distance from bow: 11.3 (m)

B Bow length: 8.0 (m)

C Remainder of length: 3.3 (m)

D Beam: 4.0 (m)

Advanced - User defined 2D shape for chart display

Standard shape Browse...

User-defined

Vessel - 3D model

3d\Models\Sockeye\Sockeye.mod Browse

Depth line Transparent Note : Model is scaled only to length, so as to maintain aspect ratio

OK Avbryt Bruk

Options

Navigator

Lat

Lng

COG ●●


SOG 30 Err. (m)

ROT 0

Hd T D m

UTC 21:15:11 (22:15)

Log Marker



On track Off track

Actual

WPT Wpt +

Dist Wpt -

BrT

XTE Show Plan

TTG

ETA

DTR (nm)

ETR

Target Marker

Dist (nm) Place

BrgT

Setup

Chart Manual

